

A landscape photograph showing a wide river confluence. In the foreground, there is a grassy bank with some dry, yellowish grass. The river water is a deep greenish-blue. In the distance, a town with various buildings and houses is visible across the river. A vibrant rainbow is visible in the sky, arching over the town and the river. The sky is a mix of blue and grey, suggesting a recent or approaching storm.

# Confluence on the Confluence Nutrient NPS Colorado Agricultural Actions

Robert T. Sakata

Sakata Farms, Brighton CO

October 6, 2022

# CO SB90-126: The Agricultural Chemicals and Groundwater Protection Act

- <https://ag.colorado.gov/conservation/agricultural-water-quality>



## **Pro-Active Agricultural Community**

- Partners: CDPHE, CDA, CSU, Agricultural Producers
- Authority to CDA to regulate agricultural chemical bulk storage and mixing/loading areas
- Groundwater monitoring program
- Education and training (CSU)
- Funding: tax on fertilizer sales and labeling of pesticides for use in Colorado

# Accomplishments of the SB90-126 Program



Developed regulations to reduce the risk of large contamination



Developed a monitoring program to test for Nitrogen and a wide range of agricultural chemicals



Formed an advisory committee to help guide the program



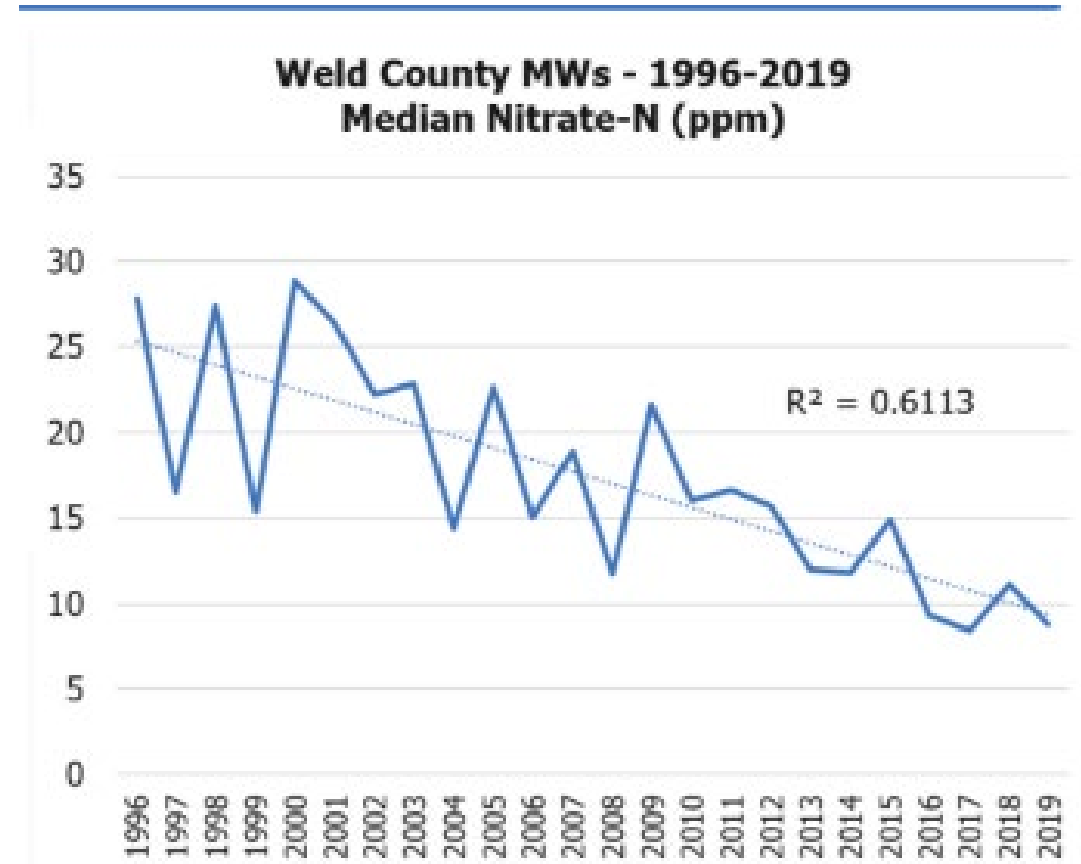
Best Management Practices developed



Research into areas that needed more information

# South Platte Groundwater Report 2019

- 11 Weld County Long Term (WCLT) monitoring sites that have been sampled annually since 1996 show a downward trend in median NO<sub>3</sub>-N that is statistically significant
- 7 wells have consistently detected dissolved orthophosphate since 2012 have shown marked decreases in 2018 and 2019





# CO SB19-186: Expand Agricultural Chemical Management Program Protect Surface Water

---

- The positive results of the Groundwater Program
  - Importance of collecting data
- CWQC Reg 85 Nutrient Standards
  - “If voluntary nonpoint source B MPs are not effective in managing nutrients...the Commission may consider the adoption of prohibitions or precautionary measures”







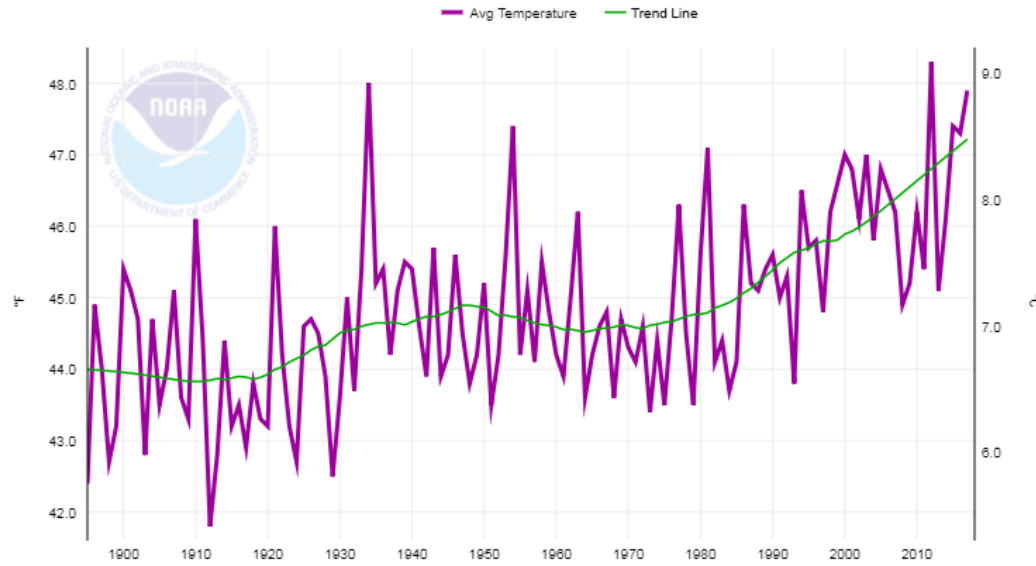






# NOAA Colorado Climate Summaries 2022

Colorado, Average Temperature, Annual

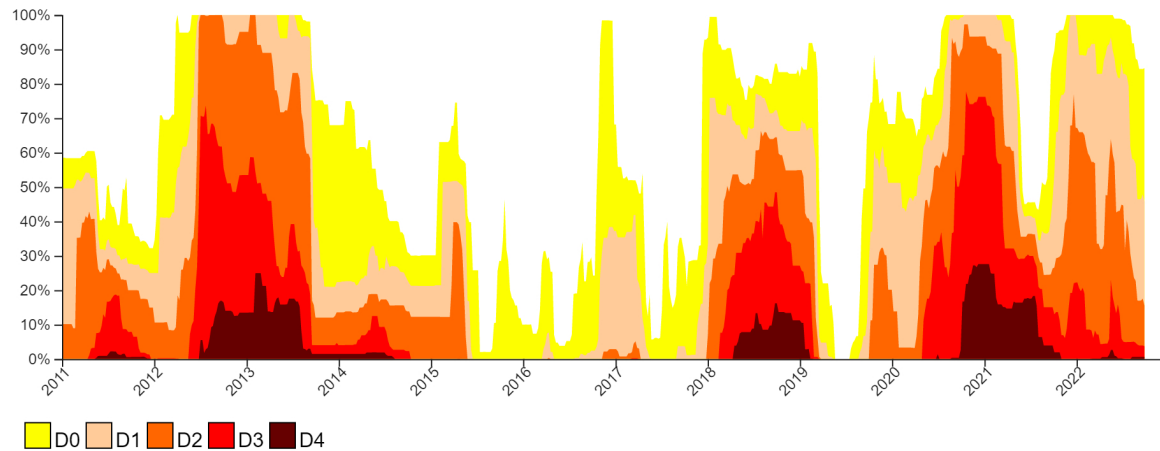


## 2000 - Present (Weekly)

The U.S. Drought Monitor (USDM) is a national map released every Thursday, showing parts of the U.S. that are in drought. The USDM relies on drought experts to synthesize the best available data and work with local observers to interpret the information. The USDM also incorporates ground truthing and information about how drought is affecting people, via a network of more than 450 observers across the country, including state climatologists, National Weather Service staff, Extension agents, and hydrologists. [Learn more.](#)

Time Period (Years):  to

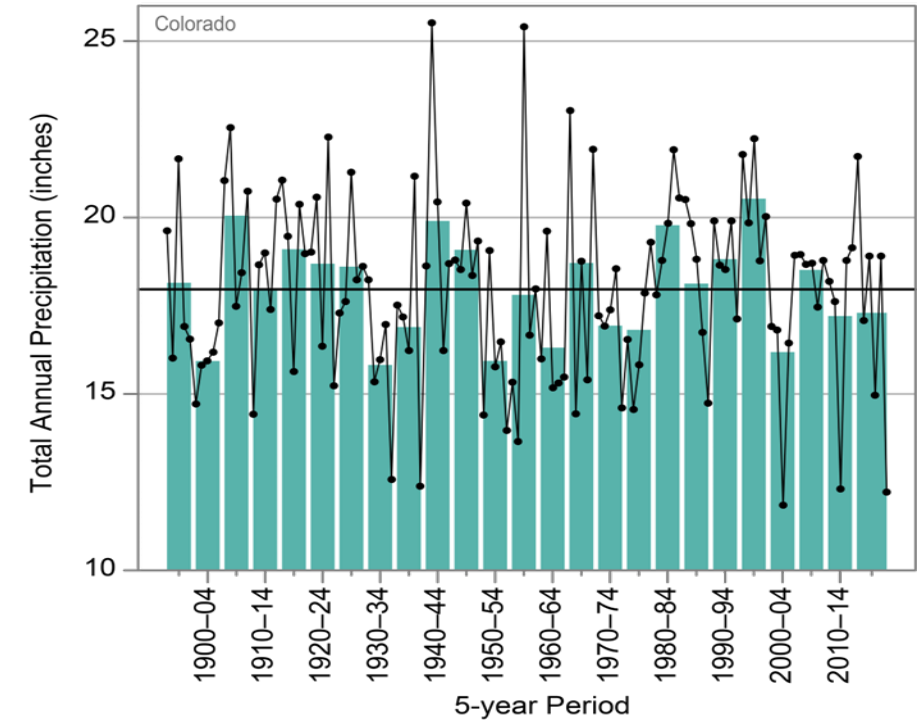
Latest Available Data: 2022-09-27



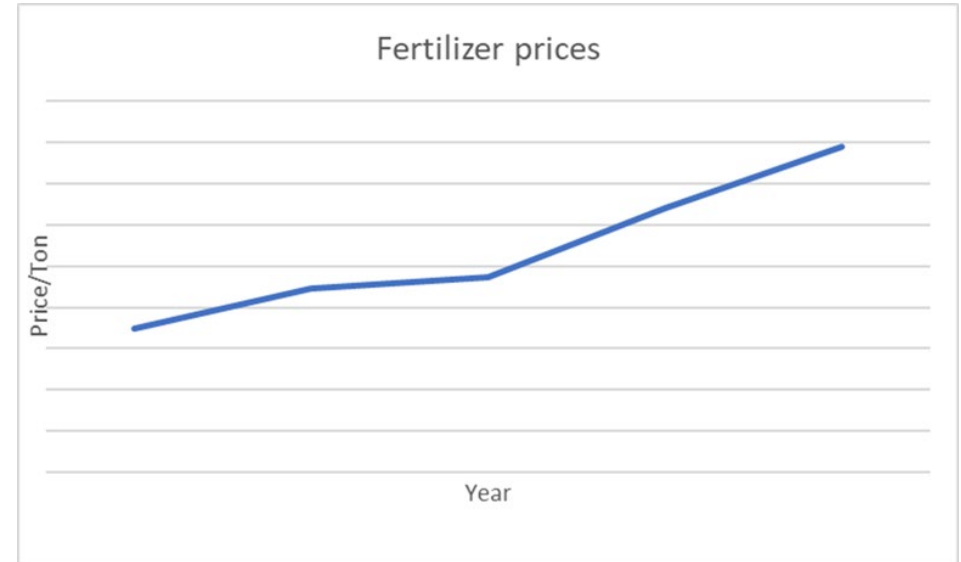
D0
  D1
  D2
  D3
  D4

Click or hover on legend boxes to interact with the graph.

Observed Annual Precipitation



Fertilizer prices







**Thank-you**  
**Remember to support your local farmers!**